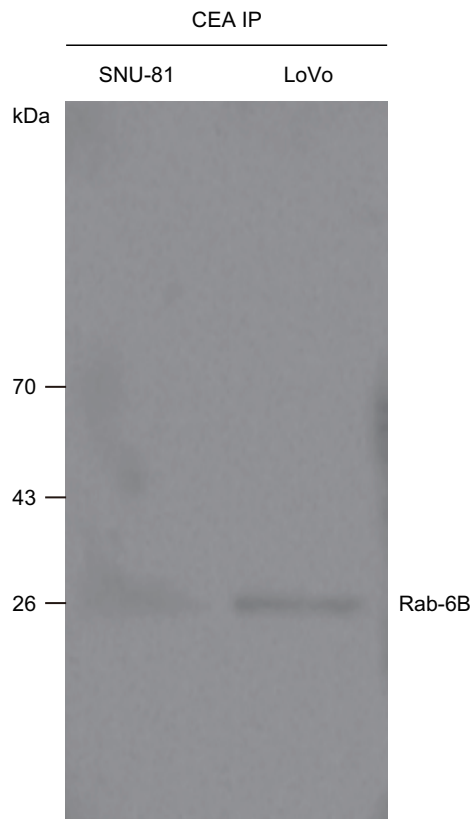


Supplementary Fig. S1. EDetection of CEA in anti-CEA antibody immunoprecipitates. Western blot analysis of CEA in IgG and anti-CEA antibody [IP(CEA)] immunoprecipitates of LoVo and SNU-81 cells. For CEA detection, whole cell lysates and IgG immunoprecipitates were used as positive and negative controls, respectively. CEA, carcinoembryonic antigen.



Supplementary Fig. S2. Presence of Rab-6B and interaction between CEA and Rab-6B in LoVo. Western blot analysis of CEA and Rab-6B was performed in CEA immunoprecipitate of LoVo whole cell lysate. CEA, carcinoembryonic antigen.