



## Correction: Adverse effect of excess body weight on survival in cervical cancer patients after surgery and radiotherapy

Yunseon Choi, MD, PhD<sup>1</sup>, Ki Jung Ahn, MD, PhD<sup>1</sup>, Sung Kwang Park, PhD<sup>1</sup>,  
Heunglae Cho, MD, PhD<sup>1</sup>, Ji Young Lee, MD<sup>2</sup>

<sup>1</sup>Department of Radiation Oncology, <sup>2</sup>Division of Oncology/Hematology, Department of Internal Medicine, Inje University Busan Paik Hospital, Inje University College of Medicine, Busan, Korea

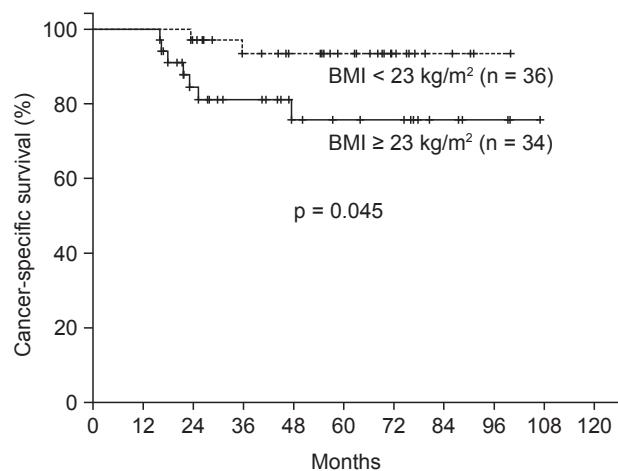
<https://doi.org/10.3857/roj.2016.01977>

Radiat Oncol J 2017;35(1):48-54

We noticed that the original version of this paper contains typographical error in Fig. 2.

In Fig. 2 (page 52), 'BMI  $\geq$  23 kg/m<sup>2</sup> (n = 36)' must be changed into 'BMI < 23 kg/m<sup>2</sup> (n = 36)'.

Corrected version of the figure appear below.



**Fig. 2.** Cancer-specific survival by overweight or obesity.